

Product: RadeonHD Driver

Author/Publisher: Hans de Ruiter/A-EON Technology Ltd

Version: RadeonHD 1.2



Product/Description & Overview:

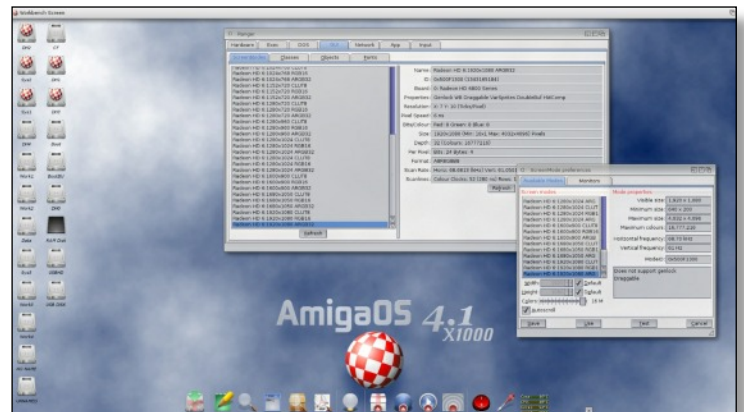
The RadeonHD driver development for the AmigaOS was commissioned by A-EON Technology for its ground breaking AmigaONE X1000 computer. The Driver supports 2D and Compositing under AmigaOS 4.1 with a wide range of RadeonHD graphics cards including: the X1300-X1950 series, HD4000 series, "Evergreen" HD5000 series, "Northern Islands" HD6000 series and "Southern Island" HD7000 series RadeonHD cards. The RadeonHD driver also provides the basic framework for 3D support which is being implemented by Hyperion Entertainment for AmigaOS 4. RadeonHD version 1.2 also supports latest generation of AMD Radeon Rx graphics cards from the R5, R7 and R9 series**.

Key Features:

Delivering modern graphics capabilities for the AmigaONE X1000 and selected Next-Generation AmigaOS machines.

Driver Specifications:

- Support for "R520" (X1300-X1950 series)
- Support for "R700" (HD4000 series)
- Support for "Evergreen" (HD5000 series)
- Support for "Northern Islands" (HD6000 series)
- Support for "Southern Islands" (HD7000 series)
- Support for the latest generation of AMD Radeon Rx graphics cards from the R5, R7 and R9 series**
- 2D Driver with compositing



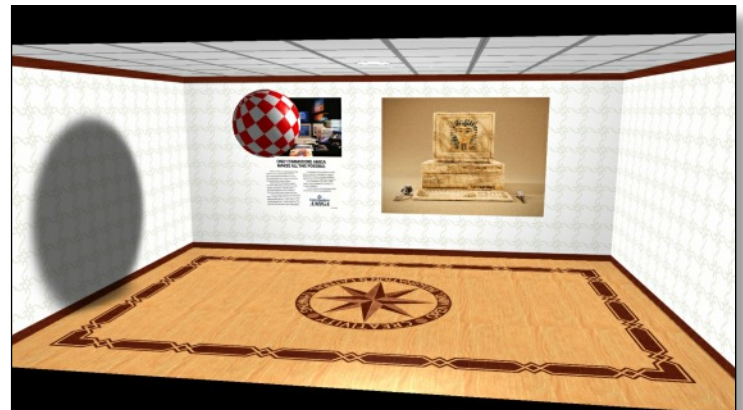
System Requirements:

- RadeonHD PCI Express Graphics Card**
- AmigaOS 4.1 or greater
- AmigaOne X1000 with latest firmware
- AmigaOne 500 (SAM 460ex)
- SAM 440ep with PCI to PCI-E adapter
- Recommended: AmigaOS4.1 - Final Edition

(**refer to the list for supported cards on next page)

Credits:

Hans de Ruiter, AmigaONE X1000 beta test team



Supported Radeon graphics cards:

RadeonHD Series:

Most graphics cards in the RadeonHD series are supported including:-

- R520 (X1300-X1950 series)
- R700 (HD4000 series)
- Evergreen (HD5000 series)
- Northern Islands (HD6000 series)
- Southern Islands (HD7000 series)

Radeon Rx Series:

Added support for the latest generation of AMD Radeon Rx graphics cards from the R5, R7 and R9 series:

- Radeon R5 230/235/235X (GPU = Caicos XT)
- Radeon R7 250X (GPU = Cape Verde XT)
- Radeon R9 255 (GPU = Cape Verde PRX)

- Radeon R7 265 (GPU = Pitcairn Pro)
- Radeon R9 270 (GPU = Curaçao Pro - rebranded/updated Pitcairn GPU)
- Radeon R9 270X (GPU = Curaçao XT - rebranded/updated Pitcairn GPU)

- Radeon R9 280 (GPU = Tahiti Pro)
- Radeon R9 280X (GPU = Tahiti XR2 - Tahiti XT GPU)

WARNING:

The following graphics cards from the Sea Islands series GPUs are not currently supported:-

- Radeon HD 7790: GPU = Bonaire XT
- Radeon R7 260: GPU = Bonaire
- Radeon R7 260X: GPU = Bonaire XTX

NOTE: There are differences and incompatibilities between cards from supplied by different manufacturers. Check with A-EON or the Amiga forums for information about Radeon graphics cards that have been tested and are know to work.